

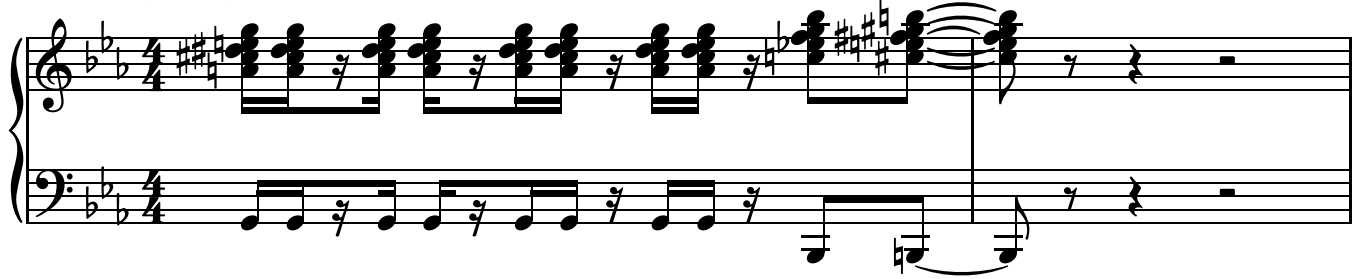
# TANK!

菅野よう子「Kanno Youko」

arranged by Ron "duVillage" van Dorp

## カウボーイビバップ「Cowboy Bebop」

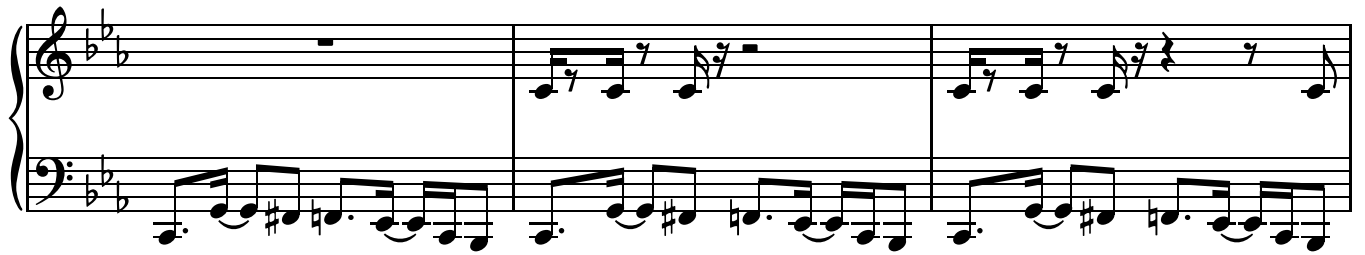
(♩ = 140)



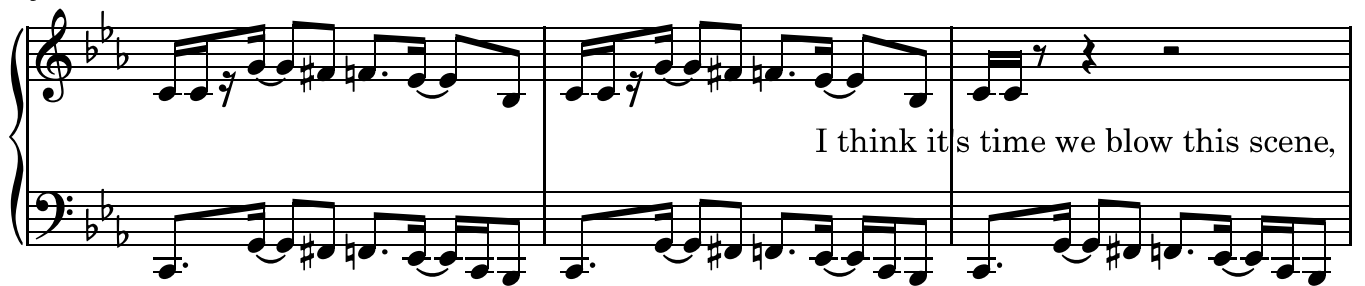
3



6



9



12



15

Measures 15 and 16 of the piano score. The key signature has three flats (B-flat, E-flat, A-flat). Measure 15 features a complex right-hand melody with many beamed sixteenth and thirty-second notes, and a left-hand accompaniment of eighth notes. Measure 16 continues the right-hand melody with a final half-note chord, while the left hand plays a descending eighth-note line.

17

Measures 17 and 18 of the piano score. The notation is identical to measures 15 and 16, maintaining the same melodic and harmonic structure.

19

Measures 19 and 20 of the piano score. The right-hand melody continues with similar rhythmic complexity, and the left-hand accompaniment remains consistent with the previous measures.

21

Measures 21 and 22 of the piano score. The musical notation is identical to measures 19 and 20.

23

Measures 23 and 24 of the piano score. Measure 23 introduces a new texture with dense, beamed chords in the right hand and a steady eighth-note bass line in the left. Measure 24 continues this pattern with a final half-note chord in the right hand.

25

Measures 25-26 of a piano piece. The key signature has three flats (B-flat, E-flat, A-flat). Measure 25 features a complex treble staff with many beamed sixteenth and thirty-second notes, and a bass staff with a steady eighth-note accompaniment. Measure 26 shows a continuation of the treble staff's activity, ending with a double bar line and repeat dots, while the bass staff continues its accompaniment.

27

Measures 27-28. Measure 27 continues the intricate treble staff melody from the previous system. Measure 28 features a more active bass staff with a series of eighth-note runs, while the treble staff has a few final notes and a repeat sign.

29

Measures 29-30. Measure 29 continues the treble staff's melodic line. Measure 30 shows a continuation of the eighth-note accompaniment in the bass staff, with the treble staff ending on a final chord.

31

Measures 31-32. Measure 31 continues the treble staff's melodic line. Measure 32 features a continuation of the eighth-note accompaniment in the bass staff, with the treble staff ending on a final chord.

33

Measures 33-34. Measure 33 continues the treble staff's melodic line. Measure 34 features a continuation of the eighth-note accompaniment in the bass staff, with the treble staff ending on a final chord.

35

Measures 35-36 of the musical score. The key signature has two flats (B-flat and E-flat). Measure 35 features a complex chordal texture in the right hand with many sharps and naturals, and a bass line with eighth and quarter notes. Measure 36 continues the pattern with similar chordal complexity and a steady bass line.

37

Measures 37-39 of the musical score. Measure 37 shows a more active right hand with eighth-note runs and a bass line with eighth notes. Measure 38 continues the eighth-note patterns. Measure 39 features a sustained, complex chord in the right hand and a bass line with eighth notes.

40

Measures 40-42 of the musical score. Measure 40 has a right hand with eighth-note runs and a bass line with eighth notes. Measure 41 continues the eighth-note patterns. Measure 42 features a sustained, complex chord in the right hand and a bass line with eighth notes.

43

Measures 43-44 of the musical score. Measure 43 shows a right hand with eighth-note runs and a bass line with eighth notes. Measure 44 features a sustained, complex chord in the right hand and a bass line with eighth notes.

45

Measures 45-46 of the musical score. Measure 45 has a right hand with eighth-note runs and a bass line with eighth notes. Measure 46 features a sustained, complex chord in the right hand and a bass line with eighth notes.

47

Measures 47 and 48 of a piano piece. The key signature has two flats (B-flat and E-flat). Measure 47 features a complex texture with multiple sixteenth-note runs in both the treble and bass staves. Measure 48 continues this texture with more sixteenth-note patterns and some chords.

49

Measures 49 and 50. Measure 49 shows a continuation of the sixteenth-note patterns. Measure 50 features a more melodic line in the treble staff with some grace notes, while the bass staff continues with rhythmic accompaniment.

51

Measures 51 and 52. Measure 51 has a melodic line in the treble staff with a trill-like figure. Measure 52 features a triplet of eighth notes in the treble staff and a sustained chord.

52

Measures 53 and 54. Measure 53 contains two triplet markings over eighth notes in the treble staff. Measure 54 features a triplet of eighth notes in the treble staff and a melodic line in the bass staff.

53

Measures 55 and 56. Measure 55 has a melodic line in the treble staff with some grace notes. Measure 56 features a melodic line in the treble staff and a rhythmic accompaniment in the bass staff.

55

Measures 55-56: Treble clef features a complex chordal texture with many accidentals (sharps and flats) and rests. Bass clef features a steady eighth-note accompaniment.

57

Measures 57-58: Treble clef has a melodic line with some accidentals and rests. Bass clef continues the eighth-note accompaniment.

59

Measures 59-61: Treble clef has a complex chordal texture with many accidentals and rests. Bass clef continues the eighth-note accompaniment.

62

Measures 62-64: Treble clef has a melodic line with some accidentals and rests. Bass clef continues the eighth-note accompaniment.

65

Measures 65-66: Treble clef has a melodic line with some accidentals and rests. Bass clef continues the eighth-note accompaniment.

67

Measures 67-68 of a piano piece in B-flat major. Measure 67 features a treble staff with a continuous eighth-note melody and a bass staff with a steady eighth-note accompaniment. Measure 68 continues the melody with some grace notes and rests in the bass staff.

69

Measures 69-70. Measure 69 has a treble staff with eighth-note chords and a bass staff with a walking bass line. Measure 70 continues the rhythmic pattern with some melodic variation in the treble.

71

pno.

Measures 71-72. Measure 71 includes a piano solo in the treble staff, indicated by the 'pno.' marking, featuring chords and rests. The piano accompaniment continues in both staves. Measure 72 features a triplet in the treble staff and a continuation of the bass line.

73

Measures 73-74. Measure 73 has a treble staff with eighth-note chords and a bass staff with a walking bass line. Measure 74 continues the melody with some grace notes and rests in the bass staff.

pno. 75

Measures 75-76. The right hand (RH) features chords and rests. The left hand (LH) features a triplet eighth-note pattern in measures 75 and 76.

pno. 77

Measures 77-78. The right hand (RH) features a triplet eighth-note pattern in measure 77. The left hand (LH) features a more complex rhythmic pattern in measures 77 and 78.

pno. 79

Measures 79-80. The right hand (RH) features chords and rests. The left hand (LH) features a complex rhythmic pattern in measures 79 and 80.



81

Measures 81 and 82 of a piano piece. Measure 81 features a treble clef staff with a sequence of eighth notes: F4, G4, A4, Bb4, C5, D5, E5, F5, G5, A5, Bb5, C6, D6, E6, F6, G6, A6, Bb6, C7, D7, E7, F7, G7, A7, Bb7, C8, D8, E8, F8, G8, A8, Bb8, C9, D9, E9, F9, G9, A9, Bb9, C10, D10, E10, F10, G10, A10, Bb10, C11, D11, E11, F11, G11, A11, Bb11, C12, D12, E12, F12, G12, A12, Bb12, C13, D13, E13, F13, G13, A13, Bb13, C14, D14, E14, F14, G14, A14, Bb14, C15, D15, E15, F15, G15, A15, Bb15, C16, D16, E16, F16, G16, A16, Bb16, C17, D17, E17, F17, G17, A17, Bb17, C18, D18, E18, F18, G18, A18, Bb18, C19, D19, E19, F19, G19, A19, Bb19, C20, D20, E20, F20, G20, A20, Bb20, C21, D21, E21, F21, G21, A21, Bb21, C22, D22, E22, F22, G22, A22, Bb22, C23, D23, E23, F23, G23, A23, Bb23, C24, D24, E24, F24, G24, A24, Bb24, C25, D25, E25, F25, G25, A25, Bb25, C26, D26, E26, F26, G26, A26, Bb26, C27, D27, E27, F27, G27, A27, Bb27, C28, D28, E28, F28, G28, A28, Bb28, C29, D29, E29, F29, G29, A29, Bb29, C30, D30, E30, F30, G30, A30, Bb30, C31, D31, E31, F31, G31, A31, Bb31, C32, D32, E32, F32, G32, A32, Bb32, C33, D33, E33, F33, G33, A33, Bb33, C34, D34, E34, F34, G34, A34, Bb34, C35, D35, E35, F35, G35, A35, Bb35, C36, D36, E36, F36, G36, A36, Bb36, C37, D37, E37, F37, G37, A37, Bb37, C38, D38, E38, F38, G38, A38, Bb38, C39, D39, E39, F39, G39, A39, Bb39, C40, D40, E40, F40, G40, A40, Bb40, C41, D41, E41, F41, G41, A41, Bb41, C42, D42, E42, F42, G42, A42, Bb42, C43, D43, E43, F43, G43, A43, Bb43, C44, D44, E44, F44, G44, A44, Bb44, C45, D45, E45, F45, G45, A45, Bb45, C46, D46, E46, F46, G46, A46, Bb46, C47, D47, E47, F47, G47, A47, Bb47, C48, D48, E48, F48, G48, A48, Bb48, C49, D49, E49, F49, G49, A49, Bb49, C50, D50, E50, F50, G50, A50, Bb50, C51, D51, E51, F51, G51, A51, Bb51, C52, D52, E52, F52, G52, A52, Bb52, C53, D53, E53, F53, G53, A53, Bb53, C54, D54, E54, F54, G54, A54, Bb54, C55, D55, E55, F55, G55, A55, Bb55, C56, D56, E56, F56, G56, A56, Bb56, C57, D57, E57, F57, G57, A57, Bb57, C58, D58, E58, F58, G58, A58, Bb58, C59, D59, E59, F59, G59, A59, Bb59, C60, D60, E60, F60, G60, A60, Bb60, C61, D61, E61, F61, G61, A61, Bb61, C62, D62, E62, F62, G62, A62, Bb62, C63, D63, E63, F63, G63, A63, Bb63, C64, D64, E64, F64, G64, A64, Bb64, C65, D65, E65, F65, G65, A65, Bb65, C66, D66, E66, F66, G66, A66, Bb66, C67, D67, E67, F67, G67, A67, Bb67, C68, D68, E68, F68, G68, A68, Bb68, C69, D69, E69, F69, G69, A69, Bb69, C70, D70, E70, F70, G70, A70, Bb70, C71, D71, E71, F71, G71, A71, Bb71, C72, D72, E72, F72, G72, A72, Bb72, C73, D73, E73, F73, G73, A73, Bb73, C74, D74, E74, F74, G74, A74, Bb74, C75, D75, E75, F75, G75, A75, Bb75, C76, D76, E76, F76, G76, A76, Bb76, C77, D77, E77, F77, G77, A77, Bb77, C78, D78, E78, F78, G78, A78, Bb78, C79, D79, E79, F79, G79, A79, Bb79, C80, D80, E80, F80, G80, A80, Bb80, C81, D81, E81, F81, G81, A81, Bb81, C82, D82, E82, F82, G82, A82, Bb82, C83, D83, E83, F83, G83, A83, Bb83, C84, D84, E84, F84, G84, A84, Bb84, C85, D85, E85, F85, G85, A85, Bb85, C86, D86, E86, F86, G86, A86, Bb86, C87, D87, E87, F87, G87, A87, Bb87, C88, D88, E88, F88, G88, A88, Bb88, C89, D89, E89, F89, G89, A89, Bb89, C90, D90, E90, F90, G90, A90, Bb90, C91, D91, E91, F91, G91, A91, Bb91, C92, D92, E92, F92, G92, A92, Bb92, C93, D93, E93, F93, G93, A93, Bb93, C94, D94, E94, F94, G94, A94, Bb94, C95, D95, E95, F95, G95, A95, Bb95, C96, D96, E96, F96, G96, A96, Bb96, C97, D97, E97, F97, G97, A97, Bb97, C98, D98, E98, F98, G98, A98, Bb98, C99, D99, E99, F99, G99, A99, Bb99, C100, D100, E100, F100, G100, A100, Bb100, C101, D101, E101, F101, G101, A101, Bb101, C102, D102, E102, F102, G102, A102, Bb102, C103, D103, E103, F103, G103, A103, Bb103, C104, D104, E104, F104, G104, A104, Bb104, C105, D105, E105, F105, G105, A105, Bb105, C106, D106, E106, F106, G106, A106, Bb106, C107, D107, E107, F107, G107, A107, Bb107, C108, D108, E108, F108, G108, A108, Bb108, C109, D109, E109, F109, G109, A109, Bb109, C110, D110, E110, F110, G110, A110, Bb110, C111, D111, E111, F111, G111, A111, Bb111, C112, D112, E112, F112, G112, A112, Bb112, C113, D113, E113, F113, G113, A113, Bb113, C114, D114, E114, F114, G114, A114, Bb114, C115, D115, E115, F115, G115, A115, Bb115, C116, D116, E116, F116, G116, A116, Bb116, C117, D117, E117, F117, G117, A117, Bb117, C118, D118, E118, F118, G118, A118, Bb118, C119, D119, E119, F119, G119, A119, Bb119, C120, D120, E120, F120, G120, A120, Bb120, C121, D121, E121, F121, G121, A121, Bb121, C122, D122, E122, F122, G122, A122, Bb122, C123, D123, E123, F123, G123, A123, Bb123, C124, D124, E124, F124, G124, A124, Bb124, C125, D125, E125, F125, G125, A125, Bb125, C126, D126, E126, F126, G126, A126, Bb126, C127, D127, E127, F127, G127, A127, Bb127, C128, D128, E128, F128, G128, A128, Bb128, C129, D129, E129, F129, G129, A129, Bb129, C130, D130, E130, F130, G130, A130, Bb130, C131, D131, E131, F131, G131, A131, Bb131, C132, D132, E132, F132, G132, A132, Bb132, C133, D133, E133, F133, G133, A133, Bb133, C134, D134, E134, F134, G134, A134, Bb134, C135, D135, E135, F135, G135, A135, Bb135, C136, D136, E136, F136, G136, A136, Bb136, C137, D137, E137, F137, G137, A137, Bb137, C138, D138, E138, F138, G138, A138, Bb138, C139, D139, E139, F139, G139, A139, Bb139, C140, D140, E140, F140, G140, A140, Bb140, C141, D141, E141, F141, G141, A141, Bb141, C142, D142, E142, F142, G142, A142, Bb142, C143, D143, E143, F143, G143, A143, Bb143, C144, D144, E144, F144, G144, A144, Bb144, C145, D145, E145, F145, G145, A145, Bb145, C146, D146, E146, F146, G146, A146, Bb146, C147, D147, E147, F147, G147, A147, Bb147, C148, D148, E148, F148, G148, A148, Bb148, C149, D149, E149, F149, G149, A149, Bb149, C150, D150, E150, F150, G150, A150, Bb150, C151, D151, E151, F151, G151, A151, Bb151, C152, D152, E152, F152, G152, A152, Bb152, C153, D153, E153, F153, G153, A153, Bb153, C154, D154, E154, F154, G154, A154, Bb154, C155, D155, E155, F155, G155, A155, Bb155, C156, D156, E156, F156, G156, A156, Bb156, C157, D157, E157, F157, G157, A157, Bb157, C158, D158, E158, F158, G158, A158, Bb158, C159, D159, E159, F159, G159, A159, Bb159, C160, D160, E160, F160, G160, A160, Bb160, C161, D161, E161, F161, G161, A161, Bb161, C162, D162, E162, F162, G162, A162, Bb162, C163, D163, E163, F163, G163, A163, Bb163, C164, D164, E164, F164, G164, A164, Bb164, C165, D165, E165, F165, G165, A165, Bb165, C166, D166, E166, F166, G166, A166, Bb166, C167, D167, E167, F167, G167, A167, Bb167, C168, D168, E168, F168, G168, A168, Bb168, C169, D169, E169, F169, G169, A169, Bb169, C170, D170, E170, F170, G170, A170, Bb170, C171, D171, E171, F171, G171, A171, Bb171, C172, D172, E172, F172, G172, A172, Bb172, C173, D173, E173, F173, G173, A173, Bb173, C174, D174, E174, F174, G174, A174, Bb174, C175, D175, E175, F175, G175, A175, Bb175, C176, D176, E176, F176, G176, A176, Bb176, C177, D177, E177, F177, G177, A177, Bb177, C178, D178, E178, F178, G178, A178, Bb178, C179, D179, E179, F179, G179, A179, Bb179, C180, D180, E180, F180, G180, A180, Bb180, C181, D181, E181, F181, G181, A181, Bb181, C182, D182, E182, F182, G182, A182, Bb182, C183, D183, E183, F183, G183, A183, Bb183, C184, D184, E184, F184, G184, A184, Bb184, C185, D185, E185, F185, G185, A185, Bb185, C186, D186, E186, F186, G186, A186, Bb186, C187, D187, E187, F187, G187, A187, Bb187, C188, D188, E188, F188, G188, A188, Bb188, C189, D189, E189, F189, G189, A189, Bb189, C190, D190, E190, F190, G190, A190, Bb190, C191, D191, E191, F191, G191, A191, Bb191, C192, D192, E192, F192, G192, A192, Bb192, C193, D193, E193, F193, G193, A193, Bb193, C194, D194, E194, F194, G194, A194, Bb194, C195, D195, E195, F195, G195, A195, Bb195, C196, D196, E196, F196, G196, A196, Bb196, C197, D197, E197, F197, G197, A197, Bb197, C198, D198, E198, F198, G198, A198, Bb198, C199, D199, E199, F199, G199, A199, Bb199, C200, D200, E200, F200, G200, A200, Bb200, C201, D201, E201, F201, G201, A201, Bb201, C202, D202, E202, F202, G202, A202, Bb202, C203, D203, E203, F203, G203, A203, Bb203, C204, D204, E204, F204, G204, A204, Bb204, C205, D205, E205, F205, G205, A205, Bb205, C206, D206, E206, F206, G206, A206, Bb206, C207, D207, E207, F207, G207, A207, Bb207, C208, D208, E208, F208, G208, A208, Bb208, C209, D209, E209, F209, G209, A209, Bb209, C210, D210, E210, F210, G210, A210, Bb210, C211, D211, E211, F211, G211, A211, Bb211, C212, D212, E212, F212, G212, A212, Bb212, C213, D213, E213, F213, G213, A213, Bb213, C214, D214, E214, F214, G214, A214, Bb214, C215, D215, E215, F215, G215, A215, Bb215, C216, D216, E216, F216, G216, A216, Bb216, C217, D217, E217, F217, G217, A217, Bb217, C218, D218, E218, F218, G218, A218, Bb218, C219, D219, E219, F219, G219, A219, Bb219, C220, D220, E220, F220, G220, A220, Bb220, C221, D221, E221, F221, G221, A221, Bb221, C222, D222, E222, F222, G222, A222, Bb222, C223, D223, E223, F223, G223, A223, Bb223, C224, D224, E224, F224, G224, A224, Bb224, C225, D225, E225, F225, G225, A225, Bb225, C226, D226, E226, F226, G226, A226, Bb226, C227, D227, E227, F227, G227, A227, Bb227, C228, D228, E228, F228, G228, A228, Bb228, C229, D229, E229, F229, G229, A229, Bb229, C230, D230, E230, F230, G230, A230, Bb230, C231, D231, E231, F231, G231, A231, Bb231, C232, D232, E232, F232, G232, A232, Bb232, C233, D233, E233, F233, G233, A233, Bb233, C234, D234, E234, F234, G234, A234, Bb234, C235, D235, E235, F235, G235, A235, Bb235, C236, D236, E236, F236, G236, A236, Bb236, C237, D237, E237, F237, G237, A237, Bb237, C238, D238, E238, F238, G238, A238, Bb238, C239, D239, E239, F239, G239, A239, Bb239, C240, D240, E240, F240, G240, A240, Bb240, C241, D241, E241, F241, G241, A241, Bb241, C242, D242, E242, F242, G242, A242, Bb242, C243, D243, E243, F243, G243, A243, Bb243, C244, D244, E244, F244, G244, A244, Bb244, C245, D245, E245, F245, G245, A245, Bb245, C246, D246, E246, F246, G246, A246, Bb246, C247, D247, E247, F247, G247, A247, Bb247, C248, D248, E248, F248, G248, A248, Bb248, C249, D249, E249, F249, G249, A249, Bb249, C250, D250, E250, F250, G250, A250, Bb250, C251, D251, E251, F251, G251, A251, Bb251, C252, D252, E252, F252, G252, A252, Bb252, C253, D253, E253, F253, G253, A253, Bb253, C254, D254, E254, F254, G254, A254, Bb254, C255, D255, E255, F255, G255, A255, Bb255, C256, D256, E256, F256, G256, A256, Bb256, C257, D257, E257, F257, G257, A257, Bb257, C258, D258, E258, F258, G258, A258, Bb258, C259, D259, E259, F259, G259, A259, Bb259, C260, D260, E260, F260, G260, A260, Bb260, C261, D261, E261, F261, G261, A261, Bb261, C262, D262, E262, F262, G262, A262, Bb262, C263, D263, E263, F263, G263, A263, Bb263, C264, D264, E264, F264, G264, A264, Bb264, C265, D265, E265, F265, G265, A265, Bb265, C266, D266, E266, F266, G266, A266, Bb266, C267, D267, E267, F267, G267, A267, Bb267, C268, D268, E268, F268, G268, A268, Bb268, C269, D269, E269, F269, G269, A269, Bb269, C270, D270, E270, F270, G270, A270, Bb270, C271, D271, E271, F271, G271, A271, Bb271, C272, D272, E272, F272, G272, A272, Bb272, C273, D273, E273, F273, G273, A273, Bb273, C274, D274, E274, F274, G274, A274, Bb274, C275, D275, E275, F275, G275, A275, Bb275, C276, D276, E276, F276, G276, A276, Bb276, C277, D277, E277, F277, G277, A277, Bb277, C278, D278, E278, F278, G278, A278, Bb278, C279, D279, E279, F279, G279, A279, Bb279, C280, D280, E280, F280, G280, A280, Bb280, C281, D281, E281, F281, G281, A281, Bb281, C282, D282, E282, F282, G282, A282, Bb282, C283, D283, E283, F283, G283, A283, Bb283, C284, D284, E284, F284, G284, A284, Bb284, C285, D285, E285, F285, G285, A285, Bb285, C286, D286, E286, F286, G286, A286, Bb286, C287, D287, E287, F287, G287, A287, Bb287, C288, D288, E288, F288, G288, A288, Bb288, C289, D289, E289, F289, G289, A289, Bb289, C290, D290, E290, F290, G290, A290, Bb290, C291, D291, E291, F291, G291, A291, Bb291, C292, D292, E292, F292, G292, A292, Bb292, C293, D293, E293, F293, G293, A293, Bb293, C294, D294, E294, F294, G294, A294, Bb294, C295, D295, E295, F295, G295, A295, Bb295, C296, D296, E296, F296, G296, A296, Bb296, C297, D297, E297, F297, G297, A297, Bb297, C298, D298, E298, F298, G298, A298, Bb298, C299, D299, E299, F299, G299, A299, Bb299, C300, D300, E300, F300, G300, A300, Bb300, C301, D301, E301, F301, G301, A301, Bb301, C302, D302, E302, F302, G302, A302, Bb302, C303, D303, E303, F303, G303, A303, Bb303, C304, D304, E304, F304, G304, A304, Bb304, C305, D305, E305, F305, G305, A305, Bb305, C306, D306, E306, F306, G306, A306, Bb306, C307, D307, E307, F307, G307, A307, Bb307, C308, D308, E308, F308, G308, A308, Bb308, C309, D309, E309, F309, G309, A309, Bb309, C310, D310, E310, F310, G310, A310, Bb310, C311, D311, E311, F311, G311, A311, Bb311, C312, D312, E312, F312, G312, A312, Bb312, C313, D313, E313, F313, G313, A313, Bb313, C314, D314, E314, F314, G314, A314, Bb314, C315, D315, E315, F315, G315, A315, Bb315, C316, D316, E316, F316, G316, A316, Bb316, C317, D317, E317, F317, G317, A317, Bb317, C318, D318, E318, F318, G318, A318, Bb318, C319, D319, E319, F319, G319, A319, Bb319, C320, D320, E320, F320, G320, A320, Bb320, C321, D321, E321, F321, G321, A321, Bb321, C322, D322, E322, F322, G322, A322, Bb322, C323, D323, E323, F323, G323, A323, Bb323, C324, D324, E324, F324, G324, A324, Bb324, C325, D325, E325, F325, G325, A325, Bb325, C326, D326, E326, F326, G326, A326, Bb326, C327, D327, E327, F327, G327, A327, Bb327, C328, D328, E328, F328, G328, A328, Bb328, C329, D329, E329, F329, G329, A329, Bb329, C330, D330, E330, F330, G330, A330, Bb330, C331, D331, E331, F331, G331, A331, Bb331, C332, D332, E332, F332, G332, A332, Bb332, C333, D333, E333, F333, G333, A333, Bb333, C334, D334, E334, F334, G334, A334, Bb334, C335, D335, E335, F335, G335, A335, Bb335, C336, D336, E336, F336, G336, A336, Bb336, C337, D337, E337, F337, G337, A337, Bb337, C338, D338, E338, F338, G338, A338, Bb338, C339, D339, E339, F339, G339, A339, Bb339, C340, D340, E340, F340, G340, A340, Bb340, C341, D341, E341, F341, G341, A341, Bb341, C342, D342, E342, F342, G342, A342, Bb342, C343, D343, E343, F343, G343, A343, Bb343, C344, D344, E344, F344, G344, A344, Bb344, C345, D345, E345, F345, G345, A345, Bb345, C346, D346, E346, F346, G346, A346, Bb346, C347, D347, E347, F347, G347, A347, Bb347, C348, D348, E348, F348, G348, A348, Bb348, C349, D349, E349, F349, G349, A349, Bb349, C350, D350, E350, F350, G350, A350, Bb350, C351, D351, E351, F351, G351, A351, Bb351, C352, D352, E352, F352, G352, A352, Bb352, C353, D353, E353, F353, G353, A353, Bb353, C354, D354, E354, F354, G354, A354, Bb354, C355, D355, E355, F355, G355, A355, Bb355, C356, D356, E356, F356, G356, A356, Bb356, C357, D357, E357, F357, G357, A357, Bb357, C358, D358, E358, F358, G358, A358, Bb358, C359, D359, E359, F359, G359, A359, Bb359, C360, D360, E360, F360, G360, A360, Bb360, C361, D361, E361, F361, G361, A361, Bb361, C362, D362, E362, F362, G362, A362, Bb362, C363, D363, E363, F363, G363, A363, Bb363, C364

89

pno.

The image shows a musical score for piano, measures 89 and 90. The score is written for three staves: a single treble staff at the top, and a grand staff (treble and bass) below it. The key signature is B-flat major (two flats). Measure 89 features a complex texture with many beamed sixteenth notes in the treble staff and a more rhythmic accompaniment in the grand staff. Measure 90 continues this texture, with the treble staff having fewer notes and the grand staff providing a steady accompaniment. The notation includes various musical symbols such as clefs, key signature, notes, rests, and beams.

91

pno.

The musical score for piano (pno.) begins at measure 91. The key signature consists of three flats (B-flat, E-flat, A-flat). The time signature is 3/4. The score is written for two staves: a single treble staff for the right hand and a grand staff (treble and bass) for the left hand. The right hand melody is highly chromatic, featuring many accidentals. It includes a five-measure rest in the second measure of the system. The left hand accompaniment is more rhythmic, with a five-measure rest in the second measure of the system. The score ends with a double bar line.

pno. 93

Measures 93-94 of a piano score. Measure 93 features a complex, rapid sixteenth-note melody in the right hand, with a key signature of two flats (B-flat and E-flat). The left hand provides a steady accompaniment of eighth notes. Measure 94 contains a whole rest in the right hand and continues the eighth-note accompaniment in the left hand.

95

Measures 95-96 of a piano score. Measure 95 shows a continuation of the eighth-note accompaniment in the left hand, while the right hand plays a series of chords and single notes. Measure 96 features a whole rest in the right hand and continues the eighth-note accompaniment in the left hand.

97

Measures 97-98 of a piano score. Measure 97 continues the eighth-note accompaniment in the left hand and includes chords in the right hand. Measure 98 features a whole rest in the right hand and continues the eighth-note accompaniment in the left hand.

99

Measures 99-100 of a piano score. Measure 99 continues the eighth-note accompaniment in the left hand and includes chords in the right hand. Measure 100 features a whole rest in the right hand and continues the eighth-note accompaniment in the left hand, ending with a final chord in the right hand.

101

Measures 101-102. The key signature has two flats (B-flat and E-flat). Measure 101 features a complex piano accompaniment with many beamed sixteenth and thirty-second notes in both staves. Measure 102 continues this texture, ending with a whole note chord in the right hand.

103

Measures 103-104. Measure 103 features a piano accompaniment with many beamed sixteenth and thirty-second notes in both staves. Measure 104 continues this texture, ending with a whole note chord in the right hand.

105

Measures 105-107. Measure 105 features a piano accompaniment with many beamed sixteenth and thirty-second notes in both staves. Measure 106 continues this texture, ending with a whole note chord in the right hand. Measure 107 features a piano accompaniment with many beamed sixteenth and thirty-second notes in both staves.

108

Measures 108-110. Measure 108 features a piano accompaniment with many beamed sixteenth and thirty-second notes in both staves. Measure 109 continues this texture, ending with a whole note chord in the right hand. Measure 110 features a piano accompaniment with many beamed sixteenth and thirty-second notes in both staves.

111

Measures 111-113. Measure 111 features a piano accompaniment with many beamed sixteenth and thirty-second notes in both staves. Measure 112 continues this texture, ending with a whole note chord in the right hand. Measure 113 features a piano accompaniment with many beamed sixteenth and thirty-second notes in both staves.

113

Measures 113 and 114 of a musical score in B-flat major. Measure 113 features a treble clef with a series of eighth notes (F4, G4, A4, Bb4, C5, Bb4, A4, G4, F4) and a bass clef with a single Bb3 note. Measure 114 continues the treble line with eighth notes (F4, G4, A4, Bb4, C5, Bb4, A4, G4, F4) and a bass clef with a whole rest. A bracket spans the eighth notes in both measures.

115

Measures 115 and 116 of a musical score in B-flat major. Measure 115 features a treble clef with a series of eighth notes (F4, G4, A4, Bb4, C5, Bb4, A4, G4, F4) and a bass clef with a series of eighth notes (F3, G3, A3, Bb3, C4, Bb3, A3, G3, F3). Measure 116 features a treble clef with a series of eighth notes (F4, G4, A4, Bb4, C5, Bb4, A4, G4, F4) and a bass clef with a series of eighth notes (F3, G3, A3, Bb3, C4, Bb3, A3, G3, F3). A bracket spans the eighth notes in both measures. The piece ends with a double bar line and a 'gliss.' marking on the treble staff.